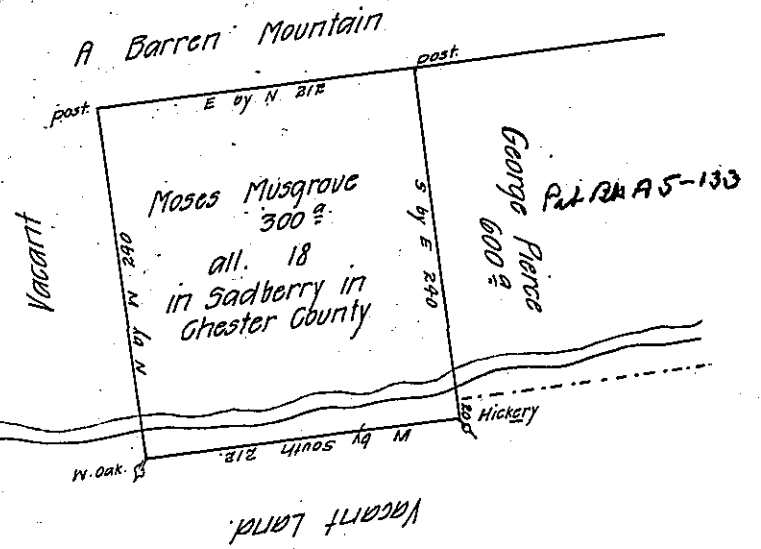
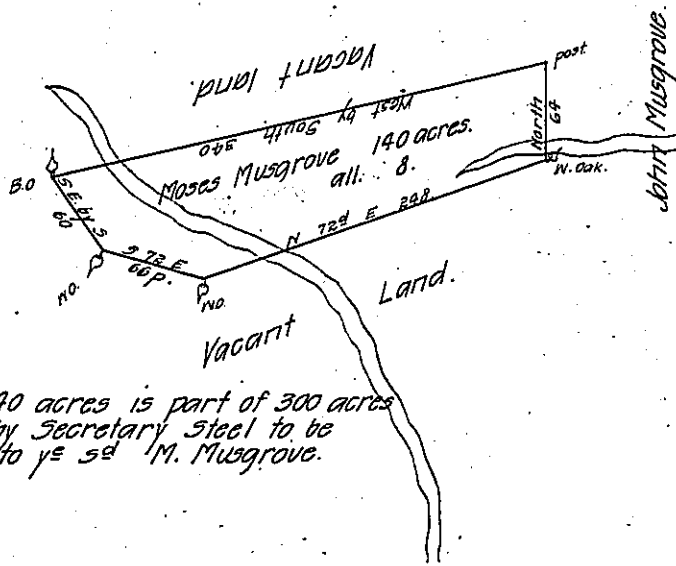


This tract of 300 was returned before and the draught is still in the office.

This 140 acres with 113 acres added by a survey made the 23^d of 8th 1729 are returned for George Ledward by a warrant from the Proprietaries dated the first day of June 1733.



This 140 acres is part of 300 acres ordered by Secretary Steel to be survey'd to ye sd M. Musgrove.

Moses Musgrove's land in ye great valley on the west side of John Musgrove's settlement. Beginning at a corner marked white oak on the south side of a small branch of Octoraro thence north 64^p to a post thence west by south by vacant land 340 per to a Black oak thence S. E. by S. by vacant land 60 perches to a small white oak thence south 72^d easterly 66 per. to a white oak then north 74^d easterly 24.8 perches to ye Place of Beginning containing 140 acres with ye usual allowance for roads and Highways Survey'd December 28, 1721.

By Isaac Taylor.

Beginning at a post at the north west corner of George Pierce's land thence south by east by the same land and vacant land 240 perches to a Hickery tree thence W. by south by vacant land 212 perches to a white oak thence north by west by vacant land 240 perches to a post thence east by north by the side of a Barren Mountain 212 per. to ye place of Beginning containing 300 acres with ye usual allowance for roads and Highways. Survey'd ye 4th of August 1713.

By Isaac Taylor.

Warrant dated 22nd 5th 1713.

Warrant for 300 dated the 25. 5th 1713.

IN TESTIMONY that the above is a copy of the original remaining on file in the Department of Internal Affairs of Pennsylvania, made conformably to an Act of Assembly approved the 16th day of February, 1833, I have herunto set my Hand and caused the Seal of said Department to be affixed at Harrisburg, this

third day of February 1911.

Henry Houch
Secretary of Internal Affairs.